



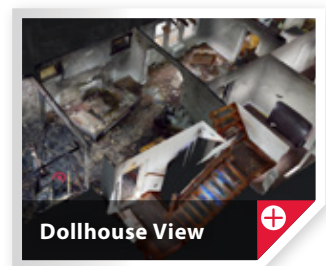
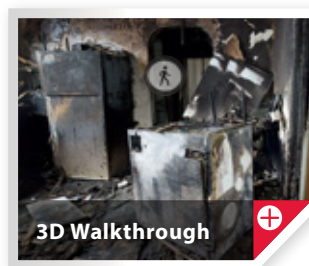
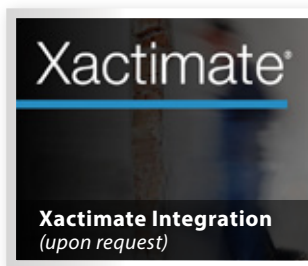
Know.

# 3D IMAGERY

DOCUMENTATION FOR ANALYSIS

## Our evaluation and investigation can provide you with the virtual access you need.

The S-E-A fire investigation team can create a 3D virtual replica of a loss utilizing the Matterport platform, **providing you with interactive access to a site — all from the safety of your desk.**



### How can S-E-A's approach provide efficiency in a claim?



Virtual access can reduce need for claims professional on-site presence



The virtual environment captured provides for:

- Spatial perception of the loss environment
- Identification and documentation of objects within rooms/compartments
- Accurate dimensions of rooms/components
- An interactive 3D model



- Easy digital access provided to floorplan diagrams and 3D spaces via private link
- Xactimate model (SKX file) upon request at project assignment



Interactive 3D model provides for site exploration, available via the cloud, so estimates can be made utilizing more than photographs.



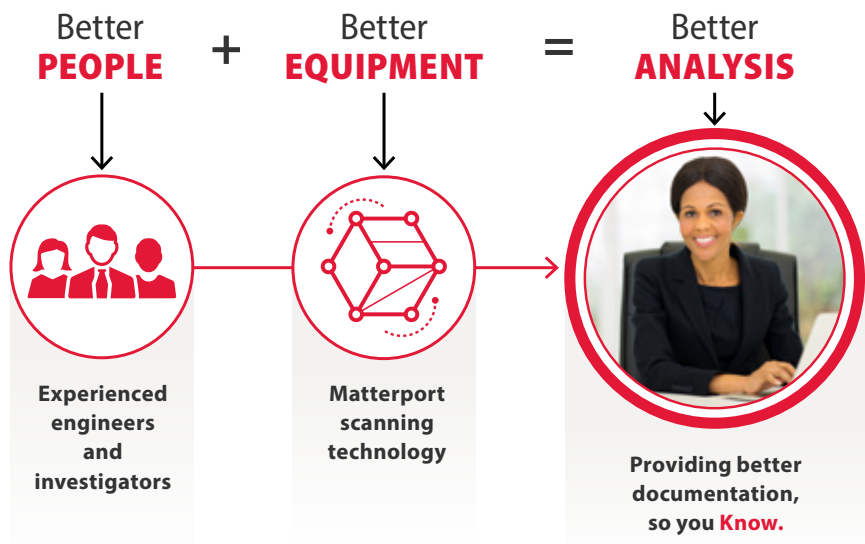
Present facts in a clear, precise way using a trusted industry technology.

Forensic Engineering, Investigation and Analysis since 1970 | (614) 888-4160 | SEAlimited.com | in x v

16 Offices and Locations • Over 300 Professionals • 14 Key Disciplines • 14 Practices • Emergency Response



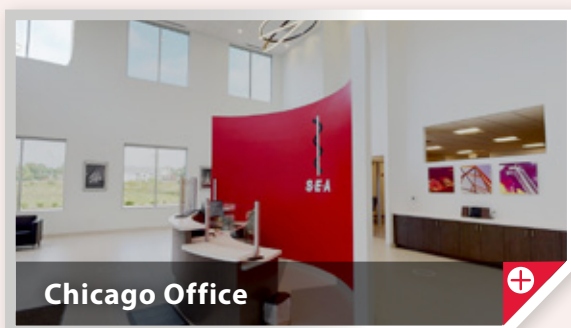
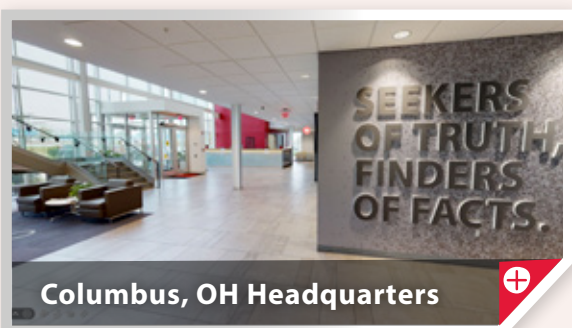
# Our team, along with the leading technology, can give you an edge with claims investigations.



## BENEFITS OF MATTERPORT

- Allows our fire investigation team to create 3D replicas of building interiors
- Provides interactive documentation and data preservation
- Efficient, time-saving technology
- S-E-A has proprietary agreements with Matterport to help ensure compliance with GDPR and CCPA data protection and privacy requirements

**Want to see how S-E-A investigators use Matterport?**  
 Take a virtual tour of S-E-A's new office spaces!



### CONTACT US

Questions?  
 Please contact our Columbus office for more information.

**(614) 888-4160**

Ryan Siekmann | Director, Regional Business Development & Operations | rsiekmann@SEAlimited.com  
 7001 Buffalo Parkway | Columbus, OH 43229



We test.  
 We investigate.  
 We reveal.  
 We explain.  
**So you *know*.**

**Know.**