

S-E-A Municipality Practice



Know.

Municipal infrastructure such as public parks, transportation systems, public buildings, roads, and community spaces experience a wide range of activity by employees, public use, and service providers, in addition to exposure to weather phenomenon. In these environments, people encounter both familiar and unfamiliar situations that can lead to incidents or safety concerns. Since 1970, S-E-A's professionals are poised to assist in the industry.

A complex mix of infrastructure, environmental factors, financial constraints, and technology can contribute to challenges.

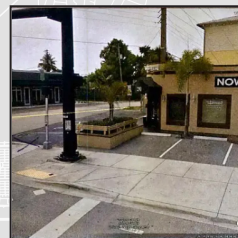
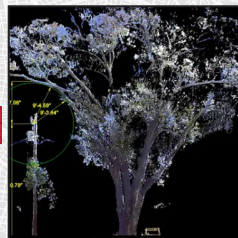
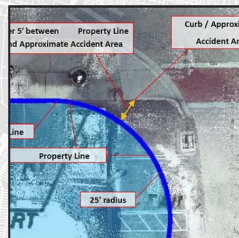


Learn more about the S-E-A Municipality Practice

sealimited.com/capability/municipality

(800) 782-6851 | SEALimited.com

With a multi-disciplined approach, our team provides comprehensive forensic engineering solutions tailored to the needs of municipal governments with critical components such as infrastructure assessment, right of way evaluations, vehicle accident reconstruction, building safety and code compliance, public entity and environmental analysis, and more.



- Vegetation Management
- Vegetation Line Contact
- Wildfires
- Tree Impact/Root Exposure
- Injury Evaluation/Reconstruction
- Surface Impact Testing
- Code Compliance
- Building Damage
- Geotechnical Evaluations
- Stormwater Runoff/Drainage
- Roadway MOT/Roadway Design
- Bridge Strikes/Damage
- Property Lines/Boundary Evaluation
- CAT Storms
- Sewage/Wastewater Treatment
- Water Treatment
- Lightning Evaluations
- Shock/Electrocution
- Utility Strikes
- Traffic Signals
- Lift Failures
- Controls Evaluations
- Solar Panel Evaluations
- Origin & Cause Analysis
- Fire Protection Analysis
- Human Perception Analysis
- Warnings, Instructions
- ... and more



We test.
We investigate.
We reveal.
We explain.
So you know.



24/7 Call Center
Rapid Response



SEAlimited.com

Submit an Assignment

Offices and Locations Across the United States

CONTACT US — WE'RE READY TO ASSIST.



Doug Rickel
Manager, National Accounts & Practice Group Strategy
(813) 215-0905 mobile
drickel@SEAlimited.com