



VEHICLE TESTING ECOSYSTEM **STRIDE**TM

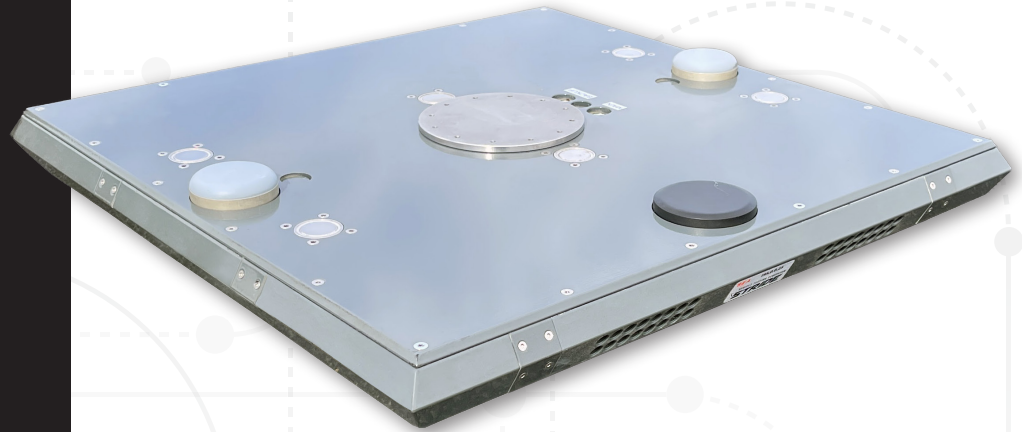
SMALL TEST ROBOT FOR INDIVIDUALS
IN DANGEROUS ENVIRONMENTS

VEHICLE & PRODUCT SOLUTIONS

STRIDETM is a low-profile and overrunnable robotic platform designed for carrying Vulnerable Road User (VRU) soft targets, such as pedestrians and bicyclists, for ADS and intelligent vehicle evaluation or development.

Priced at only a fraction of the competition, **STRIDE**TM is ideal for customers wishing to evaluate vehicle performance in scenarios including multiple mobile VRUs.

US PATENT NO. 11,934,190



SPECIFICATIONS

	STANDARD	HEAVY TRUCK
Dimensions	610 mm x 610 mm	
Weight	25 kg	27 kg
Chassis Height	50 mm <i>72 mm at small antenna protrusion</i>	54 mm <i>72 mm at small antenna protrusion</i>
Runover Capacity	1850 lbs/tire	6000 lbs/tire
Weather Resistance	Splash water protected	
Maximum Speed	20 kph	
GPS Accuracy	2 cm - RTK Integer	
Target Capacity	10 kg	

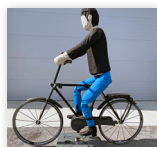
KEY FEATURES



Air-Cooled for hot weather climates



Holding on grades up to 30%



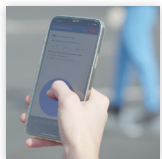
Use with a cyclist target



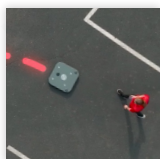
Hot-swappable batteries



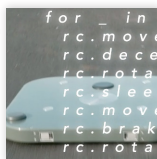
Dual antenna RTK-GPS for accurate localization



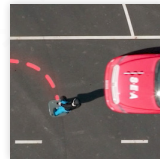
GUI software to control robot available on computers and mobile devices



Easily record and replicate paths



Easily set up custom scenarios with Python-based scripts



Integration with vehicle triggering available



Can be run over by vehicles in testing without damage

To schedule a demo
or request more
information:

VPS@SEAlimited.com



SEE THE STRIDE
IN ACTION!